

# Department of Parks engineer to help with lake planning

Officials of the Nicholas County Development Corporation were notified today that Donald Penegore, an engineer connected with the Department of Parks, would visit Carlisle during the week beginning August 21 to assist them in the long range planning of the area surrounding the new lake to be built about two miles north of Carlisle.

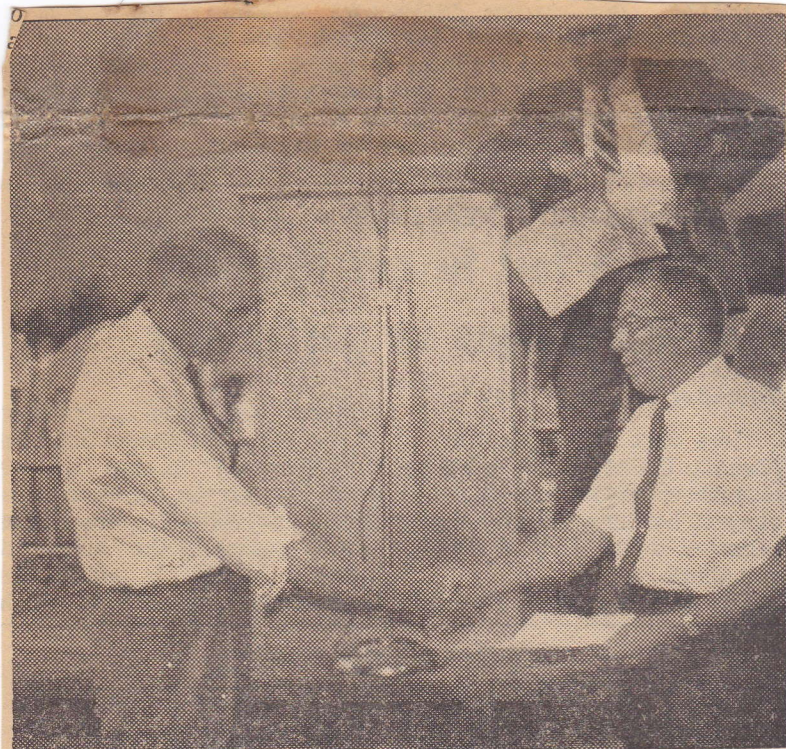
It is anticipated that overnight camp facilities will be planned near U. S. Highway 68 so that by the early part of next year people traveling this National highway will have a place to stop and spend the night if they so desire. Other immediate goals will be the planning of the boatdock area and of greatest importance to many families with children, is the proposed swimming beach area.

Some of the local development officials have been visiting other lake and park areas in their effort to plan a swimming

area that will be equal to the best to be found in the State. The Mercury again urges everyone to give their whole hearted support to this project if for no other reason than to see the swimming area developed which is a dream of long standing in this community.

It is anticipated that just as soon as possible after the overall planning has been completed surveyors will be employed to start surveying the lots that will join the lake and others that will not join the lake, but which will be equally desirable.

The officers of the local Corporation announce the resumption of public meetings on the project and the first of these will be held on Monday Night, August 28, in the circuit court room in the Court House at 7:30 p.m. All stockholders of the Company, as well as general members of the public, are urged to attend.



**CONTRIBUTION**—Raymond House, at left, a director of the Harrison County Rural Electric Cooperative, hands a check for \$500 to Dan Rich, treasurer of Nicholas County Development Corp. \$200 is for a stock purchase with \$300 as a donation to the lake development.—M. Morrison photo